



Established In 1998

**CHRISTIAN COLLEGE OF ENGINEERING & TECHNOLOGY**

Managed By St. Thomas Mission, Bhilai

Approved by AICTE and Affiliated to CSVTU, Bhilai

If You Aim High, We Provide The Means



## **7.3: Institutional Distinctiveness**

**NATURE THE NATURE**

**7.3: Institutional Distinctiveness**



Established In 1968

**CHRISTIAN COLLEGE OF ENGINEERING & TECHNOLOGY**

Managed By St. Thomas Mission, Bhilai

Approved by AICTE and Affiliated to CSVTU, Bhilai

If You Aim High, We Provide The Means

## **NURTURE THE NATURE**

The commitment of CCET Bhilai to environmental conservation, emphasizing the importance of preserving nature and promoting sustainable practices. The college is depicted as an institution that values India's religious diversity and adheres to secularism, while also taking proactive steps to care for the environment. The passage emphasizes the following points:

1. India's religious diversity is well-known, and the passage highlights its commitment to secularism, emphasizing equal respect and treatment for all faiths. This principle underpins the nation's fabric, ensuring that religious differences are embraced with equality and harmony, fostering a tolerant and inclusive society. Such an approach reflects India's dedication to upholding individual rights and communal harmony, serving as a testament to the coexistence of diverse beliefs within its cultural mosaic..

2. Environmental Responsibility: CCET Bhilai emerges as an institution acutely aware of its environmental responsibilities. The passage underscores its profound recognition of the imperative to nurture and safeguard the environment. This ethos is driven by an understanding of the indispensable role nature plays in sustaining life and the pressing need to counteract the adverse impacts of human actions.

The passage eloquently accentuates the solemn obligation humans bear to protect and restore the delicate balance of the natural world. CCET Bhilai's commitment extends beyond rhetoric, embodying a proactive stance in rectifying the ecological harm engendered by human activities. It embraces the role of custodians, viewing the environment as a fragile treasure that must be preserved for future generations.

Through this perspective, CCET Bhilai stands as a beacon of ecological consciousness, advocating not merely for rhetoric, but for actionable change. It fosters an environment where students, faculty, and visitors alike are exposed to this ethos, promoting a sense of shared guardianship over the Earth.

By underscoring the urgency of mending the environmental fabric, CCET Bhilai exemplifies a commendable dedication to addressing the ecological challenges of our time. Its aspiration to mend and safeguard the environment resonates as a clarion call for a collective commitment to fostering a sustainable and harmonious coexistence with the planet.

3. Campus Greenery and Commitment to Nature: The lush greenery and picturesque landscapes within the college campus symbolize a deep concern for Mother Nature. The college management is dedicated to providing a safe, pure, and clean environment, believing that such an environment contributes to mental strength, productivity, and efficiency.

## **7.3: Institutional Distinctiveness**



Established In 1968

**CHRISTIAN COLLEGE OF ENGINEERING & TECHNOLOGY**

Managed By St. Thomas Mission, Bhilai

Approved by AICTE and Affiliated to CSVTU, Bhilai

If You Aim High, We Provide The Means

4. **Plantation Drives and Eco Club:** The passage mentions annual plantation drives organized by the college to raise awareness about pollution and promote nature conservation. The Eco Club empowers students to protect natural resources and emphasizes fostering principles of nature and energy conservation.
5. **Alternate Energy Sources:** CCET Bhilai's strategy to achieve energy self-sufficiency involves the conservation and utilization of alternate sources of energy. The college has successfully installed solar panels on its rooftop to harness solar energy, resulting in reduced institutional electricity costs.
6. **Social Responsibility and Sustainable Practices:** The passage underscores the belief of CCET Bhilai that it has a social responsibility to practice different strategies of energy conservation, utilizing renewable resources for the benefit of society and the environment.
7. **Contribution to a Clean India:** CCET Bhilai's efforts are depicted as contributing to a cleaner India, aligning with the broader goal of environmental sustainability.

## **Caring the Cultural Legacy**

CCET Bhilai is situated in the heart of the Bhilai-Durg district in Chhattisgarh, India. Originally established as a Private Engineering college, it has emerged as a beacon of quality education in the region, serving the educational needs of the local populace and the surrounding tribal communities. Over time, the college recognized and embraced the diverse cultural heritage of its students.

The lush and vibrant campus of the college serves as a living testament to positivity and vitality, creating an atmosphere that nurtures optimism and self-assurance within its student community. The moment individuals step through its main gate, they are greeted by a captivating vista that seamlessly blends enthusiasm and serenity.

The campus, with its abundant greenery and thriving landscapes, radiates an aura of vitality that resonates with the aspirations and potential of its students. It encapsulates an environment where growth is not just encouraged but inevitable, fostering a sense of hope and confidence that permeates every corner.

This visual spectacle, with its harmonious blend of vibrancy and tranquility, symbolizes the dual facets of the college experience. It signifies the dynamic energy of exploration and learning while also offering a serene haven for contemplation and introspection.

In essence, the campus is not merely a physical space, but a living embodiment of the college's ethos and mission. It encapsulates the journey of its students - a voyage filled with enthusiasm and zest, yet grounded in the tranquility of self-discovery and knowledge. As individuals traverse through this breathtaking vista, they embark on a transformative odyssey, enriched by the unique blend of energy

## **7.3: Institutional Distinctiveness**

and serenity that defines CCET Bhilai's campus. The sign reads: "Attention - You are entering the temple of learning. Saavdhan - Aap Saraswati ke mandir me praveshtarrahehai,"

This visual invitation serves as a poignant reminder of the sacredness and reverence attached to education, symbolizing the college as a place where knowledge is cherished, revered, and nurtured. As CCET Bhilai continues to evolve, its focus on education, cultural inclusivity, and harmonious coexistence resonates through its very atmosphere, making it a vital asset to the community and an emblem of learning and growth.

## **7.3: Institutional Distinctiveness**





Established In 1958

**CHRISTIAN COLLEGE OF ENGINEERING & TECHNOLOGY**

Managed By St. Thomas Mission, Bhilai

Approved by AICTE and Affiliated to CSVTU, Bhilai

If You Aim High, We Provide The Means

## **OUR LEGACY**



## **7.3: Institutional Distinctiveness**



Established In 1998

**CHRISTIAN COLLEGE OF ENGINEERING & TECHNOLOGY**

Managed By St. Thomas Mission, Bhillai

Approved by AICTE and Affiliated to CSVTU, Bhillai

If You Aim High, We Provide The Means

## **GOING GREEN - THINK GREEN BE GREEN**



## **NATURAL AND PRISTINE**

### **7.3: Institutional Distinctiveness**





Established In 1958

**CHRISTIAN COLLEGE OF ENGINEERING & TECHNOLOGY**

Managed By St. Thomas Mission, Bhilai

Approved by AICTE and Affiliated to CSVTU, Bhilai

If You Aim High, We Provide The Means



## 7.3: Institutional Distinctiveness



Established In 1958

**CHRISTIAN COLLEGE OF ENGINEERING & TECHNOLOGY**

Managed By St. Thomas Mission, Bhilai

Approved by AICTE and Affiliated to CSVTU, Bhilai

If You Aim High, We Provide The Means

## **REDUCE YOUR FOOTPRINT AND GO GREEN**



### **7.3: Institutional Distinctiveness**





Established In 1958

**CHRISTIAN COLLEGE OF ENGINEERING & TECHNOLOGY**

Managed By St. Thomas Mission, Bhilai

Approved by AICTE and Affiliated to CSVTU, Bilai

If You Aim High, We Provide The Means

## ***GREEN MIND – GREEN LIFE***



### **7.3: Institutional Distinctiveness**



Established In 1958

# CHRISTIAN COLLEGE OF ENGINEERING & TECHNOLOGY

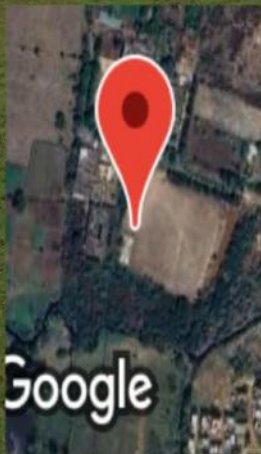
Managed By St. Thomas Mission, Bhilai

Approved by AICTE and Affiliated to CSVTU, Bilai

If You Aim High, We Provide The Means



GPS Map Camera



**Jawahar Nagar, Chhattisgarh, India**

69H5+6VW, Jawahar Nagar, Chhattisgarh 490026, India

Lat 21.228236°

Long 81.359419°

02/05/23 10:30 AM GMT +05:30

## **7.3: Institutional Distinctiveness**





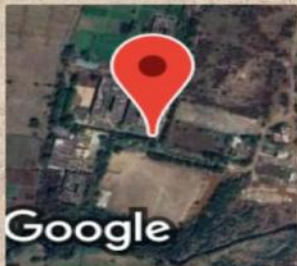
Established In 1958

# CHRISTIAN COLLEGE OF ENGINEERING & TECHNOLOGY

Managed By St. Thomas Mission, Bhilai

Approved by AICTE and Affiliated to CSVTU, Bhilai

If You Aim High, We Provide The Means



Google

GPS Map Camera

**Jawahar Nagar, Chhattisgarh, India**

Administrative block, Jawahar Nagar, Chhattisgarh

490026, India

Lat 21.229088°

Long 81.359969°

01/05/23 02:33 PM GMT +05:30

## 7.3: Institutional Distinctiveness





Established In 1958

# CHRISTIAN COLLEGE OF ENGINEERING & TECHNOLOGY

Managed By St. Thomas Mission, Bhilai

Approved by AICTE and Affiliated to CSVTU, Bhilai

If You Aim High, We Provide The Means



## 7.3: Institutional Distinctiveness



Established In 1998

**CHRISTIAN COLLEGE OF ENGINEERING & TECHNOLOGY**

Managed By St. Thomas Mission, Bhilai

Approved by AICTE and Affiliated to CSVTU, Bhilai

If You Aim High, We Provide The Means



## 7.3: Institutional Distinctiveness





Established In 1958

**CHRISTIAN COLLEGE OF ENGINEERING & TECHNOLOGY**

Managed By St. Thomas Mission, Bhilai

Approved by AICTE and Affiliated to CSVTU, Bhilai

If You Aim High, We Provide The Means

## **SOLAR ENERGY – ENERGY OF THE FUTURE**



### **7.3: Institutional Distinctiveness**





Established In 1958

**CHRISTIAN COLLEGE OF ENGINEERING & TECHNOLOGY**

Managed By St. Thomas Mission, Bhillai

Approved by AICTE and Affiliated to CSVTU, Bhillai

If You Aim High, We Provide The Means



## 7.3: Institutional Distinctiveness





Established In 1958

# CHRISTIAN COLLEGE OF ENGINEERING & TECHNOLOGY

Managed By St. Thomas Mission, Bhilai

Approved by AICTE and Affiliated to CSVTU, Bhilai

If You Aim High, We Provide The Means



## 7.3: Institutional Distinctiveness





Established In 1998

# CHRISTIAN COLLEGE OF ENGINEERING & TECHNOLOGY

Managed By St. Thomas Mission, Bhillai

Approved by AICTE and Affiliated to CSVTU, Bhillai

If You Aim High, We Provide The Means



## 7.3: Institutional Distinctiveness





Established In 1958

**CHRISTIAN COLLEGE OF ENGINEERING & TECHNOLOGY**

Managed By St. Thomas Mission, Bhilai

Approved by AICTE and Affiliated to CSVTU, Bhilai

If You Aim High, We Provide The Means



## 7.3: Institutional Distinctiveness





Established In 1958

# CHRISTIAN COLLEGE OF ENGINEERING & TECHNOLOGY

Managed By St. Thomas Mission, Bhilai

Approved by AICTE and Affiliated to CSVTU, Bhilai

If You Aim High, We Provide The Means



## 7.3: Institutional Distinctiveness





Established In 1968

# CHRISTIAN COLLEGE OF ENGINEERING & TECHNOLOGY

Managed By St. Thomas Mission, Bhilai

Approved by AICTE and Affiliated to CSVTU, Bhilai

If You Aim High, We Provide The Means



## 7.3: Institutional Distinctiveness





Established In 1958

# CHRISTIAN COLLEGE OF ENGINEERING & TECHNOLOGY

Managed By St. Thomas Mission, Bhilai

Approved by AICTE and Affiliated to CSVTU, Bhilai

If You Aim High, We Provide The Means



## 7.3: Institutional Distinctiveness





Established In 1958

# CHRISTIAN COLLEGE OF ENGINEERING & TECHNOLOGY

Managed By St. Thomas Mission, Bhillai

Approved by AICTE and Affiliated to CSVTU, Bhillai

If You Aim High, We Provide The Means



## #BEAT PLASTIC POLLUTION



Jawahar Nagar, Chhattisgarh, India  
Administrative block, Jawahar Nagar, Chhattisgarh  
490026, India  
Lat 21.229267°  
Long 81.359488°  
05/06/23 02:33 PM GMT +05:30



Jawahar Nagar, Chhattisgarh, India  
Administrative block, Jawahar Nagar, Chhattisgarh  
490026, India  
Lat 21.229267°  
Long 81.359488°  
05/06/23 02:40 PM GMT +05:30



Jawahar Nagar, Chhattisgarh, India  
Administrative block, Jawahar Nagar, Chhattisgarh  
490026, India  
Lat 21.229267°  
Long 81.359488°  
05/06/23 02:40 PM GMT +05:30



Jawahar Nagar, Chhattisgarh, India  
Administrative block, Jawahar Nagar, Chhattisgarh  
490026, India  
Lat 21.229267°  
Long 81.359488°  
05/06/23 02:39 PM GMT +05:30

## 7.3: Institutional Distinctiveness





Established In 1968

**CHRISTIAN COLLEGE OF ENGINEERING & TECHNOLOGY**

Managed By St. Thomas Mission, Bhilai

Approved by AICTE and Affiliated to CSVTU, Bhilai

If You Aim High, We Provide The Means



## **7.3: Institutional Distinctiveness**





Established In 1958

**CHRISTIAN COLLEGE OF ENGINEERING & TECHNOLOGY**

Managed By St. Thomas Mission, Bhilai

Approved by AICTE and Affiliated to CSVTU, Bhilai

If You Aim High, We Provide The Means



## 7.3: Institutional Distinctiveness





Established In 1958

**CHRISTIAN COLLEGE OF ENGINEERING & TECHNOLOGY**

Managed By St. Thomas Mission, Bhilai

Approved by AICTE and Affiliated to CSVTU, Bhilai

If You Aim High, We Provide The Means



## **7.3: Institutional Distinctiveness**



Established In 1958

**CHRISTIAN COLLEGE OF ENGINEERING & TECHNOLOGY**

Managed By St. Thomas Mission, Bhilai

Approved by AICTE and Affiliated to CSVTU, Bhilai

If You Aim High, We Provide The Means



## **7.3: Institutional Distinctiveness**





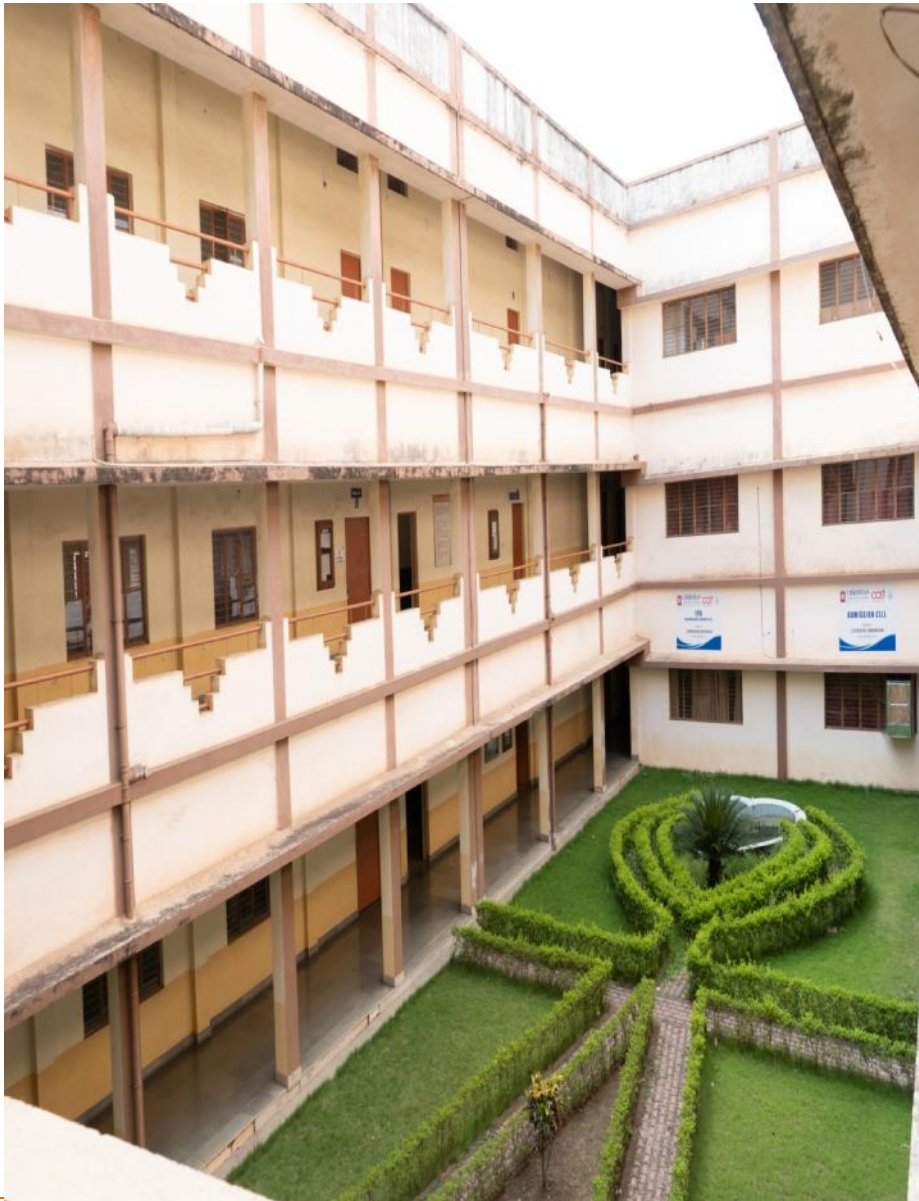
Established In 1958

**CHRISTIAN COLLEGE OF ENGINEERING & TECHNOLOGY**

Managed By St. Thomas Mission, Bhilai

Approved by AICTE and Affiliated to CSVTU, Bhilai

If You Aim High, We Provide The Means



## **7.3: Institutional Distinctiveness**



Established In 1968

**CHRISTIAN COLLEGE OF ENGINEERING & TECHNOLOGY**

Managed By St. Thomas Mission, Bhilai

Approved by AICTE and Affiliated to CSVTU, Bhilai

If You Aim High, We Provide The Means



## **7.3: Institutional Distinctiveness**





Established In 1958

**CHRISTIAN COLLEGE OF ENGINEERING & TECHNOLOGY**

Managed By St. Thomas Mission, Bhilai

Approved by AICTE and Affiliated to CSVTU, Bhilai

If You Aim High, We Provide The Means



## 7.3: Institutional Distinctiveness





Established In 1958

**CHRISTIAN COLLEGE OF ENGINEERING & TECHNOLOGY**

Managed By St. Thomas Mission, Bhilai

Approved by AICTE and Affiliated to CSVU, Bhilai

If You Aim High, We Provide The Means



## **7.3: Institutional Distinctiveness**





Established In 1958

**CHRISTIAN COLLEGE OF ENGINEERING & TECHNOLOGY**

Managed By St. Thomas Mission, Bhilai

Approved by AICTE and Affiliated to CSVTU, Bhilai

If You Aim High, We Provide The Means



## **7.3: Institutional Distinctiveness**





Established In 1958

**CHRISTIAN COLLEGE OF ENGINEERING & TECHNOLOGY**

Managed By St. Thomas Mission, Bhilai

Approved by AICTE and Affiliated to CSVTU, Bhilai

If You Aim High, We Provide The Means



## 7.3: Institutional Distinctiveness





Established In 1958

**CHRISTIAN COLLEGE OF ENGINEERING & TECHNOLOGY**

Managed By St. Thomas Mission, Bhilai

Approved by AICTE and Affiliated to CSVTU, Bhilai

If You Aim High, We Provide The Means



## 7.3: Institutional Distinctiveness